



For more information, contact:

John Pompay
 First Vice President
 602.224.4422
 jpompay@brephoenix.com

Louis Finocchiaro, SIOR
 First Vice President
 602.224.4458
 lfinocchiaro@brephoenix.com

2375 E. Camelback Rd, Suite 300
 Phoenix, Arizona 85016

ph: 602.954.9000
 fx: 602.468.8588

www.brephoenix.com

±32,423 SQUARE FEET AVAILABLE 1ST Q 2010

Deer Valley Industrial Park

21415 North 15th Lane, Phoenix, Arizona

Property Features

- ±135,602 square foot building
- ±32,423 square feet available
- Divisible to ±6,064 square feet
- ±2,400 square feet of office
- Two (2) 12' x 14' grade level doors
- Seven (7) 10' x 10' truckwell doors
- 30' clear height
- A-1 zoning - City of Phoenix
- ESFR sprinklered
- Tilt concrete construction
- Great access to Loop 101 & I-17

Managed by:



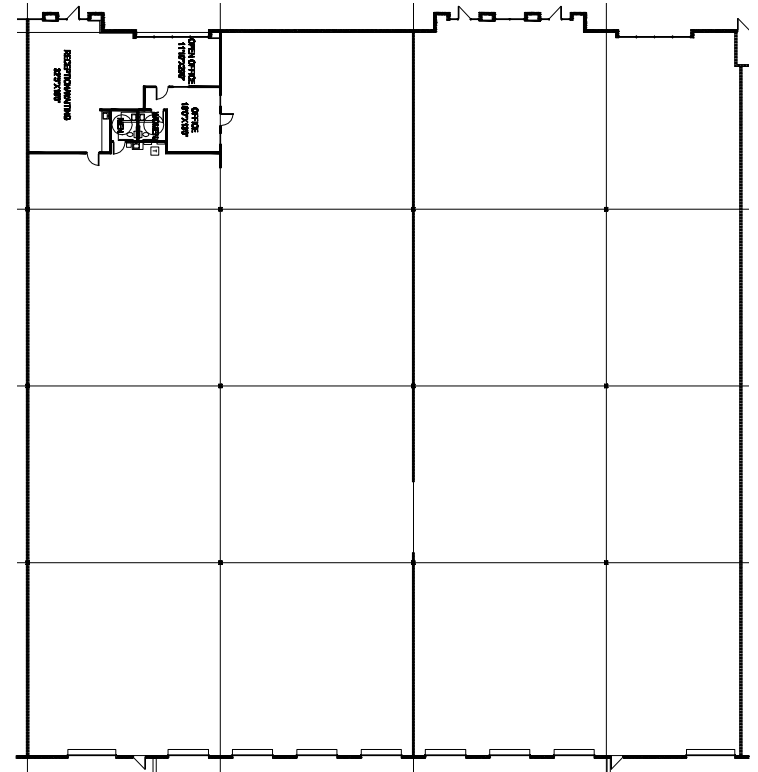
Cassidy
 Turley BRE
 Commercial

Deer Valley Industrial Park

21415 North 15th Lane, Phoenix, Arizona



Floor Plan



For more information, please contact:

John Pompay
First Vice President
602.224.4422
jpompay@brephoenix.com

Louis Finocchiaro, SIOR
First Vice President
602.224.4458
lfinocchiaro@brephoenix.com

2375 E. Camelback Rd, Suite 300
Phoenix, Arizona 85016

ph: 602.954.9000
fx: 602.468.8588

www.brephoenix.com

**Cassidy
Turley** / BRE
Commercial